

(expleo)

Manual

**Expleo-Test/Professional
Suite 11.0**

Quick-Install

expleogroup.com

Expleo Technology Germany GmbH

Stollwerckstraße 11

51149 Cologne, Germany

Telephone | +49 (0) 22 03 - 91 54 - 0

Fax | +49 (0) 22 03 - 91 54 - 15

Email | support_etp@expleogroup.com

Internet | <https://tools.expleogroup.com>

Telephone Support | +49 (0) 22 03 - 91 54 - 11

The information included in this manual as well as the software this information is based on may be modified without prior notification. Expleo Technology Germany GmbH does not enter into any commitment. Expleo cannot guarantee that the features included in the software are completely described in the manual.

The software described in this manual is provided on the basis of a license agreement. The manual may be copied by the licensee for their own use. This manual may, in whole or in part, only be passed on to third parties with the express agreement of Expleo Technology Germany GmbH.

The manual refers to the Expleo-Test/Professional Suite as of **Version 11.0**
Published January 31, 2023

The document has been created with Adobe® Acrobat® Writer. For use Adobe® Acrobat® Reader 8.0 or up is recommended.

All rights reserved.

Expleo Technology Germany GmbH uses ALLtext4.5HT/Pro from Bennet-Tec Information Systems, Inc.® of EditML by EditMLTechnologies 1999.

Orbix 6.3™ is a registered trademark of Micro Focus®. FastObjects® is a registered trademark of Versant Corp. Microsoft Windows®, Windows NT®, Windows Server™, Microsoft.NET™ and SharePoint™ are trademarks/registered trademarks of Microsoft® Corporation. Adobe® and Acrobat® are registered trademarks of Adobe® Systems Inc. Word® and Excel® PowerPoint® are trademarks of Microsoft® Corp. This product includes software developed by the Apache Software Foundation (<http://www.apache.org/>). TestComplete and TestExecute are registered trademarks of SmartBear Software®.

Contents

- 1 Quick Install Test Center 1**
 - 1.1 Initial Installation of Servers and Clients 1
 - 1.1.1 Configuration of the License Manager (only in a server installation).....2
 - 1.1.2 Configuration of the CORBA Domain (only in a server installation)3
 - 1.2 Installation of Clients on additional computers4
 - 1.2.1 Installation of the Clients.....5
 - 1.3 Starting Test Center5

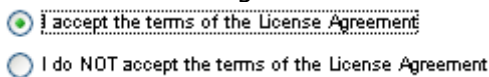
- 2 Quick Install Test Process Automation (TPA) 6**
 - 2.1 Initial Installation of TPA.....6
 - 2.2 Share Directories „reports“ and „share“ rights8
 - 2.3 Directory for the temporary JVM8
 - 2.4 Configuration9

1 Quick Install Test Center

In this document you will find information concerning the installation and configuration of the module Test Center including TCS (Test Case Specification). Depending on your license you may have different components of our Expleo-Test/Professional Suite available.

If any questions remain, you can find further information in our detailed manuals regarding installation ("Installation") or regarding the server/client landscape ("Technical Administration"). Additionally you can call our technical support hotline: support_etp@expleogroup.com

1.1 Initial Installation of Servers and Clients

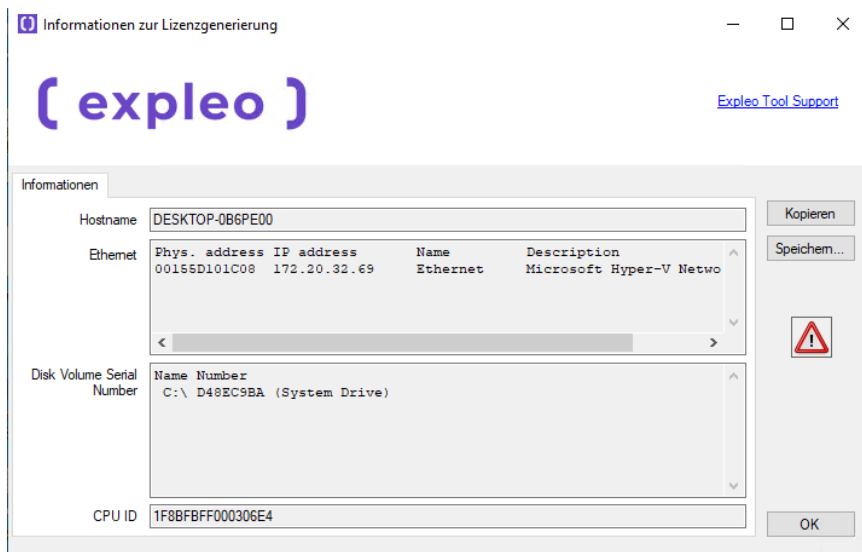
1. Start the installation program by open context menu on file **SetupTestCenterWin.exe** and select „Run as Administrator“.
2. Select the language you want to run the installation process in.
3. Continue the installation process by clicking **OK**.
4. Information regarding installation process is being displayed. Click **Next**.
5. Read the license agreement. You have to accept it to continue the installation process.


Click "Next" to go to the next installation step.
6. Select "Client und Server" to install the application completely. Click **Next**.
7. If you want to, you can enter a different installation path. Click **Next**.
8. Determine where to save the data or use the default path. Click **Next**.
9. Enter a name for the workspace environment or accept the default one. Click **Next**.
10. Start the installation by clicking **Install**. *(If necessary, confirm the security warnings from the Windows's firewall by clicking "Do not block")*
11. Finish the installation process by clicking **Done**.

1.1.1 Configuration of the License Manager (only in a server installation)

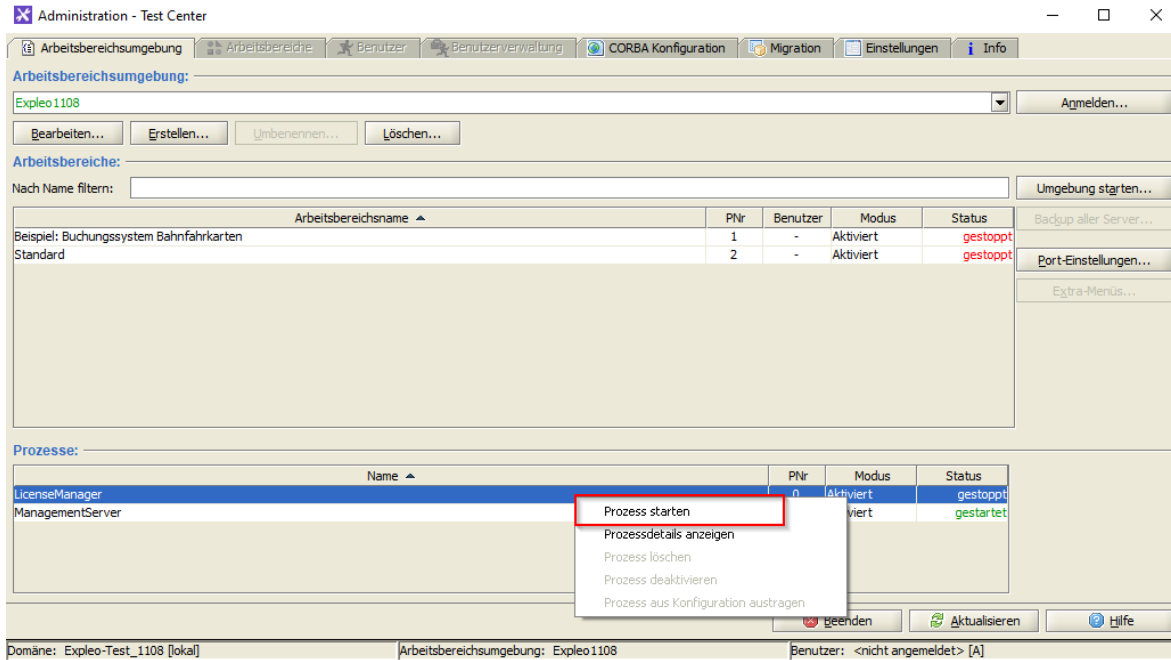
If you do not yet have a valid licence file, you must have one generated via the Expleo-Test Support. If you already have a valid licence file, you can start with point 3 of this section.

1. Open the program "License Management Information" via the start menu to obtain the necessary information for generating a licence and save it as an expleo-license-info.txt file via the "Save..." button.



2. Send this file to support_etp@expleogroup.com so that we can send you a licence file.
3. When you have received the licence file from us, save it in the already existing directory <data directory>\etc as license.lic.

- 4. Now open the administration client, log in and, if necessary, start the LicenseManager via the context menu 'Start process' in the view 'Workspace environment'.

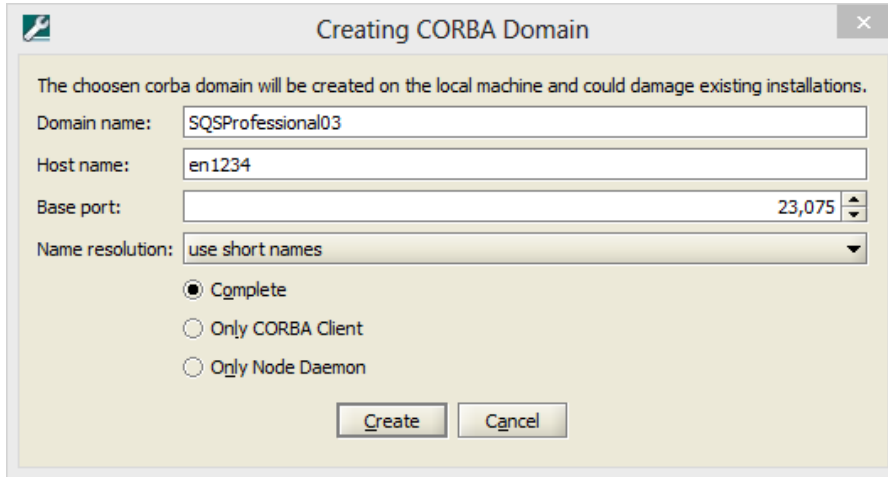


- 5. You can find out about the status of the LicenseManager in the log file via the menu item 'Show process details'.
- 6. Finally, close the administration client again.

1.1.2 Configuration of the CORBA Domain (only in a server installation)

- 1. If the CORBA domain was not configured and started by the installation process, start the "Administration" in Windows to configure Expleo-Test/Professional (*Administration has to be run as a local administrator*):
Start >> Expleo Administration >> Administration <release>
- 2. Ignore the notation about a missing domain at first and confirm by clicking **OK**.
- 3. Switch to the tab „CORBA Configuration“ and click **Create Domain**.

4. Please enter the Domain name, the Host name and the Base port or accept the default values. Check "Use short names" and "Complete".



Click **Create** to continue the configuration. If necessary, confirm the security warnings from the Windows's firewall by clicking "Do not block".

5. Restart the computer you executed the installation on.
6. Start Administration again (*Administration has to be run as a local administrator*):
Start >> Expleo Administration >> Administration <release>
7. Switch to the tab "Workspace Environments" and click **Configure environment...** in the section "Processes" to configure the workspace environment. (*If necessary, confirm the security warnings from the Windows's firewall by clicking "Do not block"*)
8. This completes the configuration.

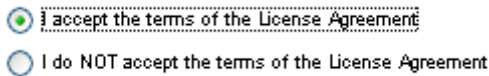
1.2 Installation of Clients on additional computers

Maybe you need to install Test Center (Client) on other computers as well. For this case you will only need following information to install the clients:

- Name or IP address of the computer you have installed the Expleo server software on
- Start port of the CORBA domain (from Locator Service)
- Name of the workspace environment

1.2.1 Installation of the Clients

If you want to install the client only, proceed as follows:

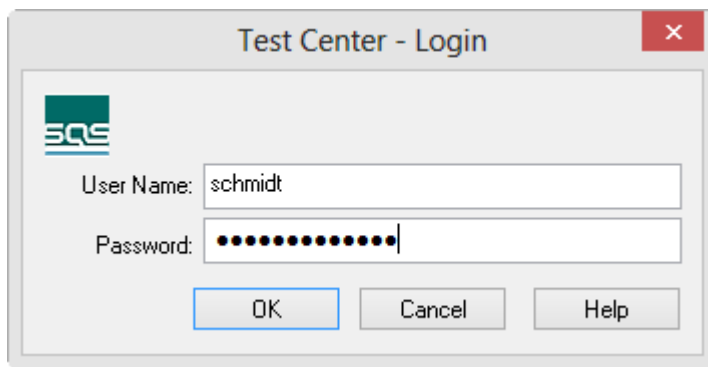
1. Start the installation program on the CD by double-clicking the file "SetupTestCenterWin.exe" (*open context menu on file and select „Run as Administrator“*).
2. Select the language you want to run the installation process in.
3. Continue the installation process by clicking **OK**.
4. Information regarding installation process is being displayed. Click **Next**.
5. Read the license agreement. You have to accept it to continue the installation process.

Click **Next** to go to the next installation step.
6. Select "Client" to only install the client. Click on **Next**.
7. If you want to, you can enter a different installation path. Click on **Next**.
8. Determine where to save the data or use the default path. Click on **Next**.
9. Enter a name for the workspace environment or accept the default one. Click on **Next**.
10. Start the installation by clicking Click on **Install**.
11. Enter the name of the computer and the port of the CORBA domain. Confirm by clicking **Next** to continue the configuration.
12. If the CORBA connection fails, please click **Previous** to return to the previous dialogue and enter the correct information. Afterwards you continue the configuration by clicking **Next**.
13. Finish the installation process by clicking **Done**. This completes the installation and configuration of the client.

1.3 Starting Test Center

1. When you have installed Test Center on your computer, start it under Windows as follows:
Start >> Expleo Test Center >> Test Center <release>

2. A login window appears. Enter your user name and the password you were given by your system administrator.

Note: If you are starting Test Center for the first time, you can login with the default user „Administrator“ and the password „Administrator“.



You can change the password in Test Center (*Extras >> Change password*) and in Administration.

2 Quick Install Test Process Automation (TPA)

This document is to describe the installation and configuration of the module Test Process Automation.

If any questions remain unanswered, please also consult our detailed installation manual („Installation.pdf“), included in the installation package. Furthermore, you can contact our technical support under: support_etp@expleogroup.com

2.1 Initial Installation of TPA

1. Start the installation by selecting „execute as administrator“ via *Setup_TPA.exe* (open the context menu of the file and click on „run as administrator“)
2. Select the language in which you would like to be guided through the installation procedure.
3. Next the installation procedure by clicking on **OK**.
4. Information on the introduction of the installation procedure is displayed. A click on **Next** will lead you to the next step.

5. Read the License Agreement. The installation will only Next if you agree to the license terms.

I accept the terms of the License Agreement
 I do NOT accept the terms of the License Agreement

By clicking **Next** you will get to the next step.

6. For a complete installation, select *Expleo-Test/Professional TPA* and *Test Center Connection (Default)*. Click on **Next**.
7. If the Test Center had already been installed, a message will be displayed saying that the suggested location for the installation may not be changed in the subsequent steps. Click on **Next**.
8. If the Test Center had already been installed, a message will be displayed saying that the suggested data directory location may not be changed in the subsequent steps. Click on **Next**.
9. In case you would like to change the default installation path, enter an installation path here. Click on **Next**.
10. Define the location for the data directory or use the default path. Click on **Next**.
11. If you want to change the default Port 8080, enter a free port for the web server. Click on **Next**.
12. If the installation is executed on a 64-bit computer, you can decide here whether the web server is to be installed as a 32 or 64 bit application. We recommend the installation of the default 64 bit application to use the available RAM to its full capacity. Click on **Next**.
13. Select the language in which the TPA workspace is to be created later on. Click on **Next**.
14. Check the paths for the CORBA installation and the domain name. This only applies if you deviated from the default settings during the installation of Test Center. Click on **Next**.
15. Check the information on the connection to the Test Center. This only applies if you deviated from the standard installation. Click on **Next**.
16. Start the installation by clicking on **Install**.
17. You complete the installation procedure by clicking on **Finish** .

2.2 Share Directories „reports“ and „share“ rights

All users using Expleo-Test/Professional TPA and the Service User for TPA as well, must possess full access to the shares and shared directories „reports“ and „share“ **before** first start of Expleo-Test/Professional TPA.

The rights must be provided for **share use** (properties / share) and for **file access** (properties / security) as well.

Follow next steps to do so:

1. Define an user group, for example „mydomain\expleo-test“.
2. Add all operating system users to the group that use Expleo-Test/Professional TPA, plus the Service user for the TPA Service, or “SYSTEM” if you don’t want to set the service user at all.
3. Assign full access to the group "mydomain\expleo-test" on the following directories.
(Properties / Security)

```
<data directory>\var\<work space environment>\ppm\share
<data directory>\var\<work space environment>\ppm\reports
```

Example:

```
C:\Expleo\var\Expleo1100\ppm\share
C:\Expleo\var\Expleo1100\ppm\reports
```

4. Assign full access to the group "mydomain\expleo-test" for the use of the following shares.
(Properties / Sharing / Permissions)

```
\\<host name>\sqsshare11.0.0-<work space environment>
\\<host name>\sqreports11.0.0-<work space environment>
```

Example:

```
\\MYSERVER\sqsshare11.0.0-Expleo1105
\\MYSERVER\sqsreports11.0.0-Expleo1105
```

2.3 Directory for the temporary JVM

All users using Expleo-Test/Professional TPA and the service user for the TPA Service must have full access to the directory for the temporary files of the Java Virtual Machine of the TPA Service. You must perform this administrative step after completing the installation before you start and use Expleo-Test/Professional TPA for the first time.

Perform the following step:

Assign full access rights to the following directory for the user group „mydomain\expleo-test“ defined in the administrative step before. (Properties / Security)

<data directory>\var\<Work space environment>\temp

Example:

C:\Expleo\var\Expleo1105\temp

2.4 Configuration

1. Open Administration as the administrator (*Open context menu and select "execute as administrator"*): Start >> Expleo Administration > Administration <release>
2. Switch to tab *Workspace Environment* and click on **Configure TPA**. If you want to deviate from the default settings, make the corresponding changes and save them by clicking on **Save**.
3. Click on **Shares...** to start the configure file access tool.
4. Select the group, you created before, and click on **Set shares**
5. After the creation of the shares is finished successfully you click on **Set access**
6. Click on **Start** to start the TPA web server. (*If needed, confirm Windows' security warning of the firewall by clicking on "Stop blocking".*)
7. Start the Internet Explorer and enter the following URL:
http://localhost:<web server port>/ppm (*example: http://localhost:8080/ppm*)

Login by entering a user and a password. (*default: Administrator / Administrator*)